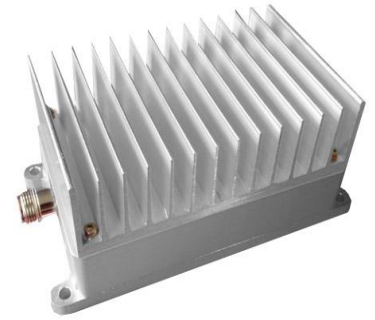


## 470-700Mhz Bi-directional Amplifier 25W

### Item # 12-303

This bi-directional Amplifier to support wide band in high speed data transmit with all TDD Radios. The frequency range of 470MHz thru 700MHz.

This AMP compatible with OFDM radios as well as radios using Direct Sequence or Frequency Hopping Spread Spectrum and Time Division duplex modulation.



### 12-303

### Technical Specifications

Features	25-30Watt Outdoor
Operating Range	470-700 MHz
Operating Mode	TDD, Time Division duplex,
Transmit Power	44.7dBm, 30W
Transmit Gain	13dB ± 1 dB (20dB Optional)
Output Power	30W (+44.7Bm)
TX Input Power	0 dBm min / 30dBm Max
Receiver Gain	15dBm ± 3
Noise Figure	<3dB typical
LED Indicators	Red: Solid on: Power and Receiving
	Green: Transmitting
Connector	N-type, female, 50 Ohm
Power Consumption	50mA (100mA if Rx Gain=30dB);Max 3A @Tx
DC Power	28V DC 3A Via Power Over Coax, DC Injector
Operating Temperature	-40 °C to + 70 °C
Amp Dimensions:	6.7" L x 4.8" W x 1-1/8" H w/ohatsink
Weight	Amplifier 2.6Lb/ Package 5Lb

### FCC NOTICE

The use of all radio equipment is subject to radio regulations in each country. It is the responsibility of the purchaser/installer/operator to insure that only approved equipment/systems are deployed. For the ISM band (900MHz, 2.4GHz, 5.7GHz) equipment manufactured, sold/or used in the USA, FCC Title 47, Part 15 governs the sale, lease, use and manufacture of equipment (wireless LAN cards, wireless Access points, amplifiers, etc.) and prohibits the same unless such equipment is used in the FCC-certified system configuration with which such equipment is authorized.