



# EZPlatform™

## AP/Hotspot/Repeater

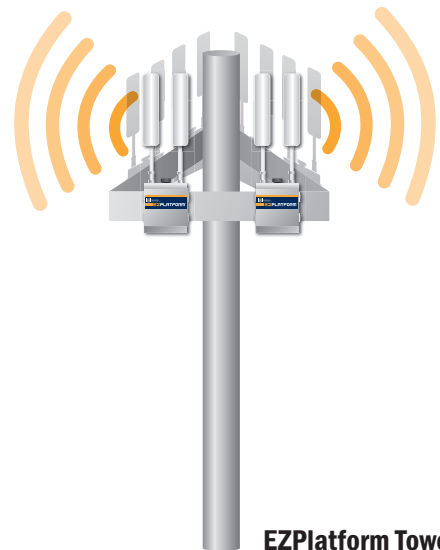
Teletronics' EZPlatform™ AP/Hotspot/Repeater is designed for high-power access point, hotspot and repeater applications. A powerful end-to-end system for a wireless Internet network can be built by integrating the EZPlatform™ with Teletronics TT™ subscriber units and other radios. The simplicity of use of the EZPlatform™ allows operators to quickly bring service to their customers, and with its two serial ports and two Ethernet ports the unit can easily incorporate GPS, GPRS, RFID, VoIP, surveillance cameras, field meters, motion sensors and data networks for multiple industrial and commercial applications. The EZPlatform™ is available in single or dual radio configuration, with 1 W (2.4 GHz) and 600 mW (2.4/5.8 GHz) radio card options.



### Technical Information

<b>Standard Compliance</b>	IEEE 802.3 10/100 BASE-T with autonegotiation
<b>Bandwidth Control</b>	MAC address based, specific and default upload/download rates
<b>Networking</b>	WAN: Static IP address/DHCP client LAN: DHCP server SNMP, remote Syslog, VPN pass-through (IPsec/PPTP), DDNS
<b>Security</b>	Administrator IP address filtering
<b>Management</b>	Web Based Management Tool, HTTP/HTTPS/Telnet Web based update, backup and restore
<b>Wireless</b>	802.11 a/b/g, 900MHz/2.4GHz/5.8GHz Multiple SSID, AP/SU mode, Adjustable TX Power AP/SU mode, Adjustable TX Power WEP, WPA and WPA2 encryption
<b>Enclosure</b>	NEMA 4, Ruggedized and Weatherproof
<b>Status Monitoring</b>	Network Status, SystemLog (compact & detail mode)
<b>Operating Temperature</b>	-20°C to +70°C

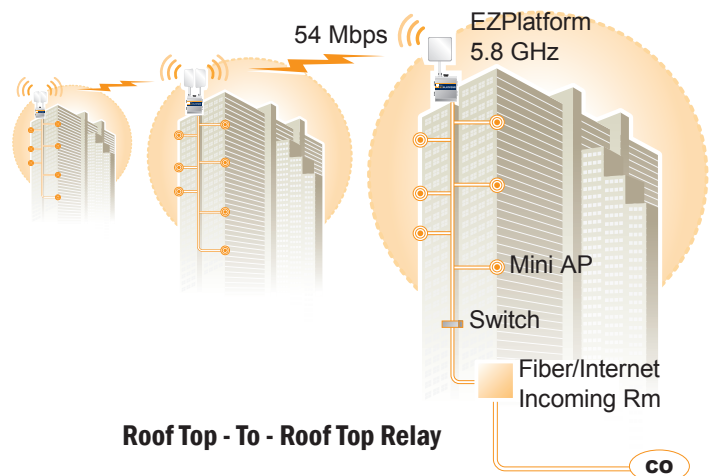
item #: 11-310



**EZPlatform Tower**

### Hardware Specifications

<b>CPU</b>	Intel® IXP422 266MHz Network Processor
<b>Memory</b>	64MB SDRAM, 16MB Flash
<b>Boot Loader</b>	RedBoot
<b>Ethernet</b>	Two 10/100BASE-T ports
<b>Serial Port</b>	Two RS232 ports
<b>Mini PCI</b>	Two MiniPCI Type III slots
<b>LEDs</b>	Power, WLAN1 STATUS, WLAN2 status
<b>Power Options</b>	Power over Ethernet, 10-48V DC
<b>Dimensions</b>	8 in x 7.5 in x 2.5 in
<b>Power Consumption</b>	25W maximum
<b>Operating System</b>	Linux 2.6.x kernel
<b>Weight</b>	7 lbs
<b>Mounting</b>	For both wall and pole mount

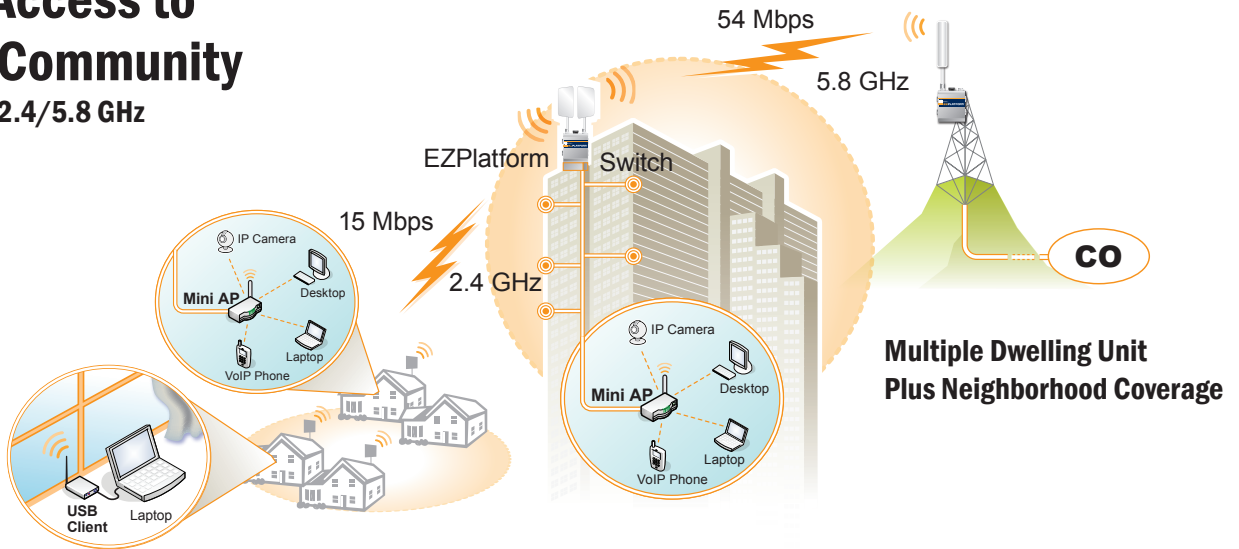


**Roof Top - To - Roof Top Relay**



# Remote Access to Isolated Community

– EZPlatform™ 2.4/5.8 GHz



# Single Building WiFi

