

## SmartAmp 2.4GHz, 5W

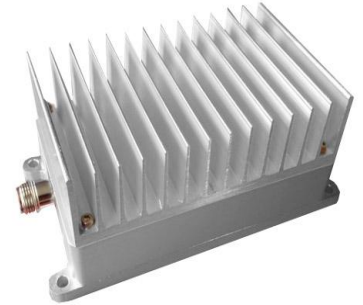
Item # 12-207RFW

SmartAmp™ is designed for extending the range of ISM Band of 900MHz, 2.4 GHz and 5.8GHz wireless radio devices, It support IEEE 802.11b/g/n or 802.11a/n radio. The SmartAmp™ is Bi-directional, in TDD Time Division duplex operation mode, provides the transmit power amplification as well as receive signal gain.

The built-in dynamic power sensor in SmartAmp™ adjusts the Radio Frequency (RF) power output level by reading the input signal power. This Automatic Gain Control (AGC) Technology, Teletronics' patented technology effectively making the RF amplifiers "Plug & Play" delivers the maximum output power at various input levels while keeping the distortion at a minimum.

### Technical Specifications

Features	5Watt Outdoor
Operating Range	2400-2500 MHz
Operating Mode	TDD, Time Division duplex,
Transmit Gain	22 dBm
Frequency Respons	± 1 dB
Output Power	5Watt (+37dBm)
TX Input Power	0 dBm min / 20dBm Max
Receiver Gain	10-14db, 12dB typical
Noise Figure	≤3.5dB typical
LED Indicators	Green: Solid on: Power and Receiving Mode; Off: NO Power
	Red: Transmitting
Connector	N-type, female, 50 Ohm
Lightning Protection	Direct DC ground at antenna
DC Surge Protection	Available
Power Consumption	12V 2A DC
Operating Temperature	-30 °C to + 60 °C
Amp Dimensions:	5" L x 3" W x 1-1/8" H
Weight	Amplifier 1.6Lb/ Package 3Lb



### Item# 12-207RFW

Please send request to:  
sales@teletronics.com  
sales@rfwirelessusa.com  
301-309-8500

### FCC NOTICE

The use of all radio equipment is subject to radio regulations in each country. It is the responsibility of the purchaser/installer/operator to insure that only approved equipment/systems are deployed. For the ISM band (900MHz, 2.4GHz, 5.7GHz) equipment manufactured, sold/or used in the USA, FCC Title 47, Part 15 governs the sale, lease, use and manufacture of equipment (wireless LAN cards, wireless Access points, amplifiers, etc.) and prohibits the same unless such equipment is used in the FCC-certified system configuration with which such equipment is authorized.

