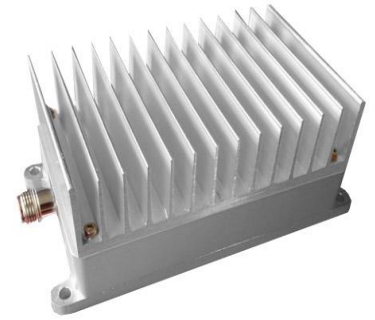


## 300-500Mhz Bi-directional Amplifier 15W

### Item # 12-302

This bi-directional Amplifier to support wide band in high speed data transmit with all TDD Radios. The frequency range of 300MHz thru 500MHz.

This AMP compatible with OFDM radios as well as radios using Direct Sequence or Frequency Hopping Spread Spectrum and Time Division duplex modulation.



### 12-302

### Technical Specifications

Features	15-20Watt Outdoor
Operating Range	300-500 MHz
Operating Mode	TDD, Time Division duplex,
Transmit Power	43dBm, 20W
Transmit Gain	28dB ± 1 dB
Output Power	20W (+43dBm)@380MHz
TX Input Power	0 dBm min / 15dBm Max
Receiver Gain	15dBm
Noise Figure	<3dB typical
LED Indicators	Red: Solid on: Power and Receiving
	Green: Transmitting
Connector	N-type, female, 50 Ohm
Power Consumption	130mA Rx; 3.4 A Tx
DC Power	12V DC Via Power Over Coax, DC Injector
Operating Temperature	-40 °C to + 70 °C
Amp Dimensions:	6.7" L x 4.8" W x 1-1/8" H w/ heatsink
Weight	Amplifier 1.6Lb/ Package 3Lb

### FCC NOTICE

The use of all radio equipment is subject to radio regulations in each country. It is the responsibility of the purchaser/installer/operator to insure that only approved equipment/systems are deployed. For the ISM band (900MHz, 2.4GHz, 5.7GHz) equipment manufactured, sold/or used in the USA, FCC Title 47, Part 15 governs the sale, lease, use and manufacture of equipment (wireless LAN cards, wireless Access points, amplifiers, etc.) and prohibits the same unless such equipment is used in the FCC-certified system configuration with which such equipment is authorized.